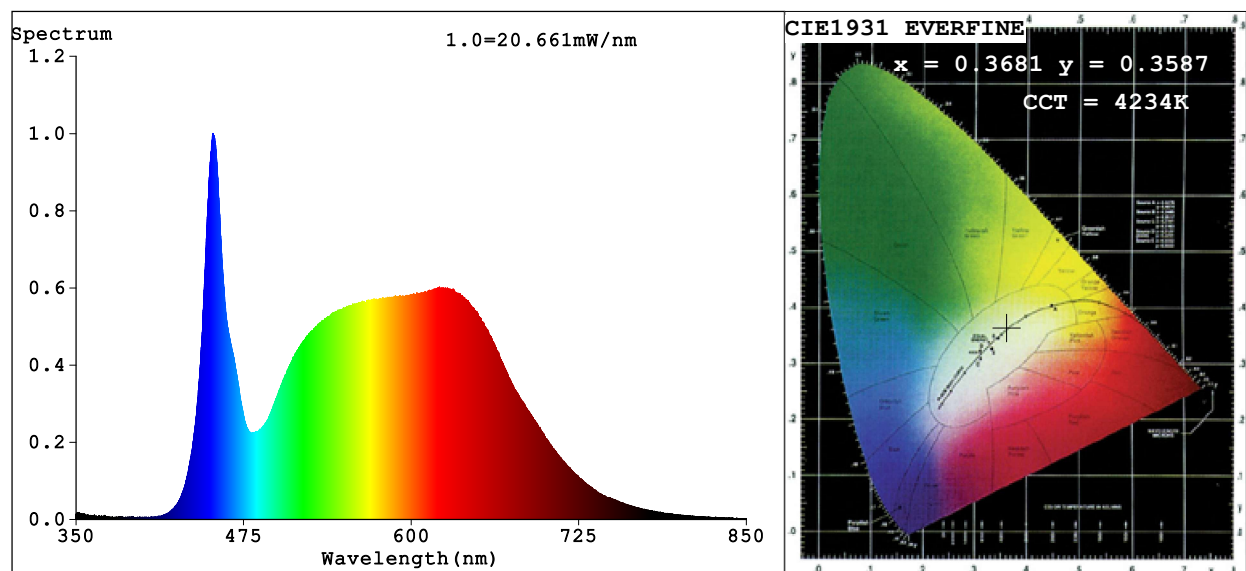


## Spectrum Test Report



### Color Parameters:

Chromaticity Coordinate:  $x=0.3681$   $y=0.3587$   $u'=0.2241$   $v'=0.4915$

CCT=4234K (Duv=-0.0049) Dominant WL:Ld =582.0nm Purity=18.1%

Ratio:R=19.4% G=76.4% B=4.2%; Peak WL:Lp=452.2nm FWHM=18.7nm

Render Index:Ra=93.2 CRI=89.9 TM30:Rf=88 Rg=102

R1 =95 R2 =95 R3 =92 R4 =93 R5 =93 R6 =90 R7 =95

R8 =92 R9 =79 R10=86 R11=91 R12=66 R13=95 R14=95 R15=95

### Photo Parameters:

Flux = 789.4 lm Eff. : 62.56 lm/W Fe = 2.809 W

### Electrical parameters:

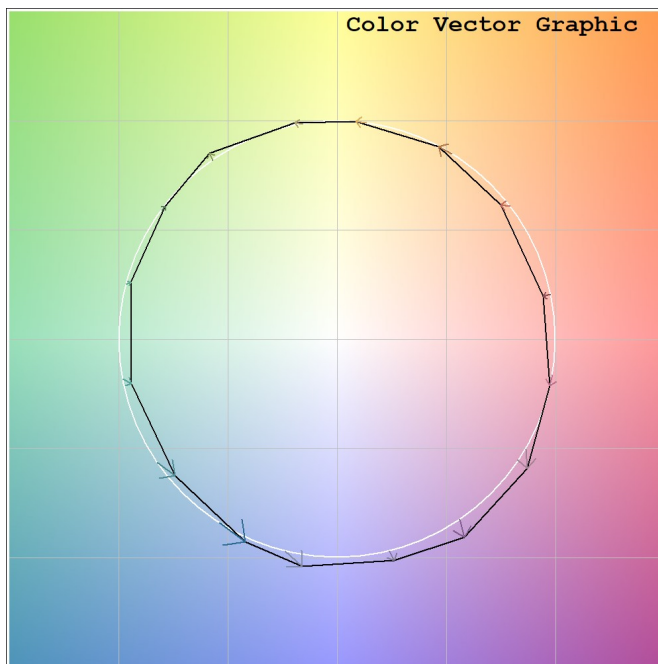
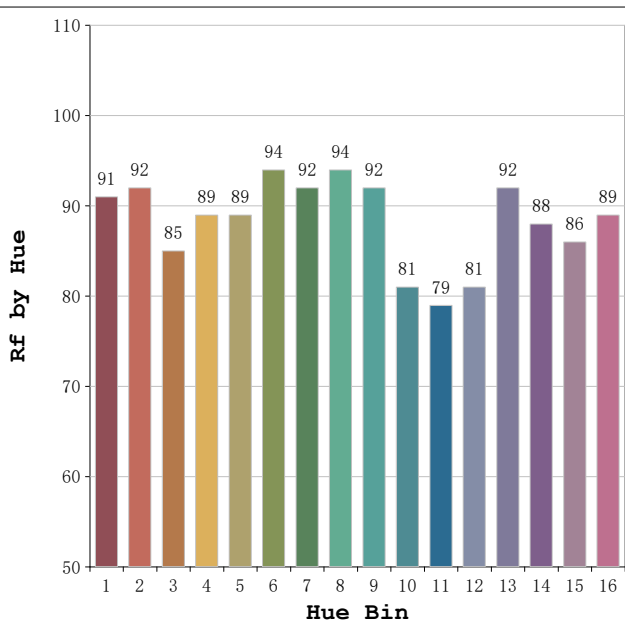
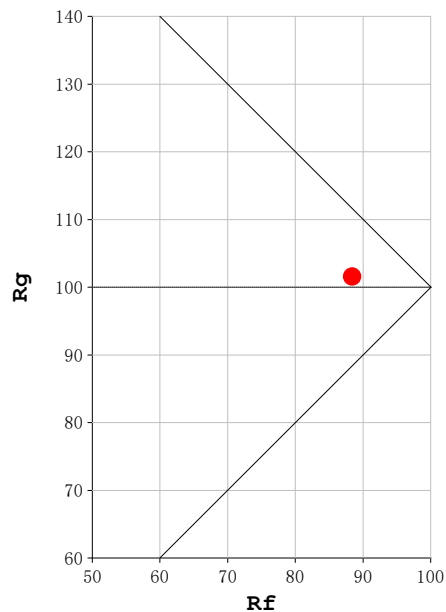
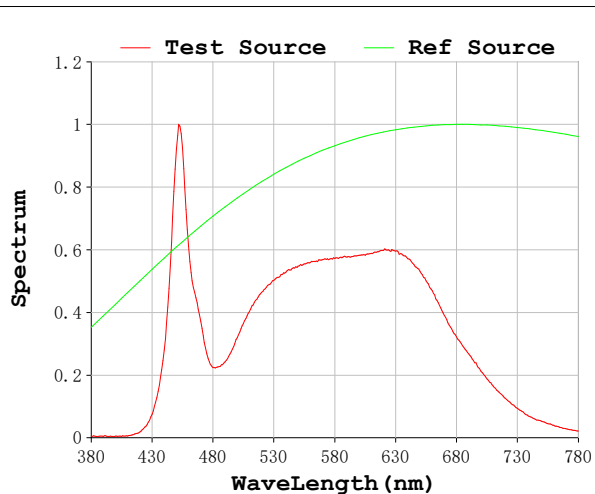
V = 23.998 V I = 0.5258 A P = 12.62 W PF = 1.000

Status: Integral T = 1357 ms Ip = 36567 (56%)

Model:Ecoled Neón Kenya 4000k  
Tester:Sergio Carneros  
Temperature:20Deg  
Manufacturer:Luz Negra

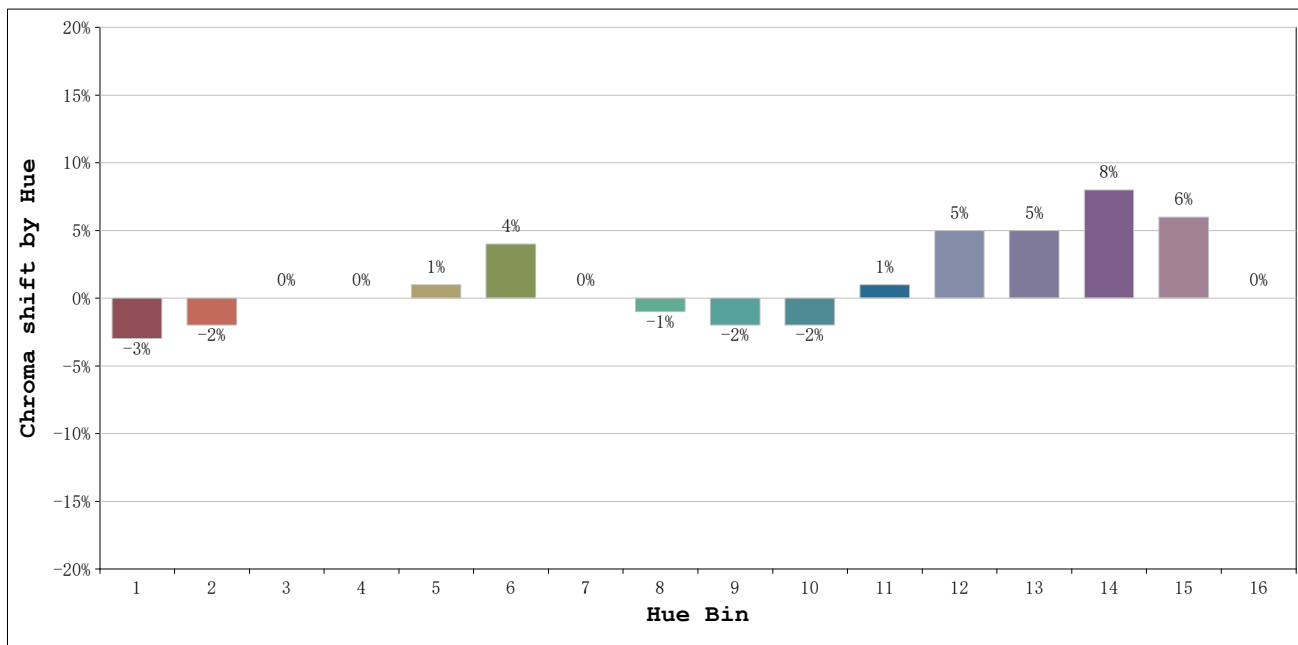
Number: 10.268  
Date:2025-06-02 12:32:00  
Humidity:50%  
Remarks:500cm de neón

**Rf: 88**      **CCT: 4234 K**      **u': 0.2241**  
**Rg: 102**      **Duv: -0.0049**      **v': 0.4915**



Model:Ecoled Neón Kenya 4000k  
 Tester:Sergio Carneros  
 Temperature:20Deg  
 Manufacturer:Luz Negra

Number: 10.268  
 Date:2025-06-02 12:32:00  
 Humidity:50%  
 Remarks:500cm de neón



			Graphic shift(%)	
Hue Bin	Hue Angle	Rf	Chroma	Hue
1	0.0° - 22.5°	91	-3	0
2	22.5° - 45.0°	92	-2	3
3	45.0° - 67.5°	85	0	7
4	67.5° - 90.0°	89	0	5
5	90.0° - 112.5°	89	1	4
6	112.5° - 135.0°	94	4	0
7	135.0° - 157.5°	92	0	-1
8	157.5° - 180.0°	94	-1	0
9	180.0° - 202.5°	92	-2	3
10	202.5° - 225.0°	81	-2	10
11	225.0° - 247.5°	79	1	15
12	247.5° - 270.0°	81	5	9
13	270.0° - 292.5°	92	5	1
14	292.5° - 315.0°	88	8	-2
15	315.0° - 337.5°	86	6	-6
16	337.5° - 360.0°	89	0	-4

Model:Ecoled Neón Kenya 4000k  
 Tester:Sergio Carneros  
 Temperature:20Deg  
 Manufacturer:Luz Negra

Number: 10.268  
 Date:2025-06-02 12:32:00  
 Humidity:50%  
 Remarks:500cm de neón